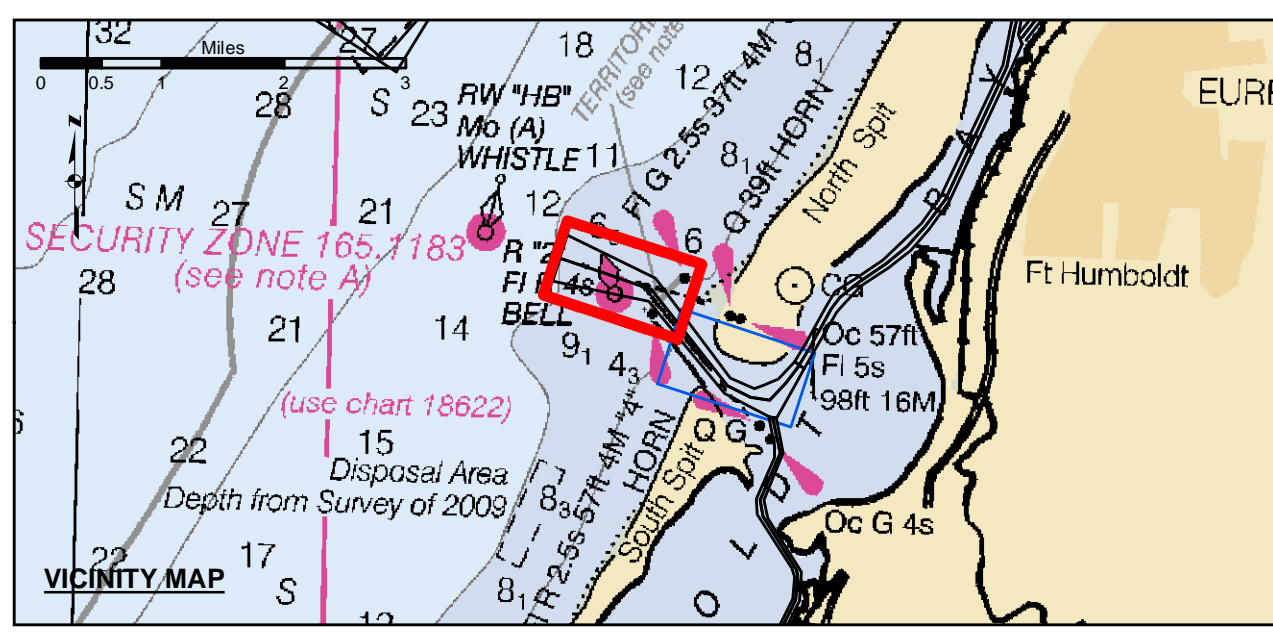


**NAD 83 CHANNEL ANGLE POINTS HUMBOLDT BAY (BAR & ENTRANCE)**

PT	X	Y	PT	X	Y
1	5936596.69	2173163.63	24	5959081.79	2187578.43
2	5938385.39	2172268.83	25	5958421.69	2187381.23
3	5940404.09	2171258.93	26	5958007.99	2186903.83
4	5943666.09	2169944.43	27	5956425.99	2183303.63
5	5944727.49	2168468.93	28	5956165.59	2181942.63
6	5945239.99	2166690.33	29	5956348.69	2181424.83
7	5945752.59	2165911.73	30	5956566.89	2180283.43
8	5946464.09	2164731.33	31	5956165.59	2179504.63
9	5946955.59	2163479.53	32	5956200.39	2178413.53
10	5947831.69	2162042.13	33	5956156.79	2177459.53
11	5948193.09	2160478.33	34	5956252.69	2176724.13
12	5949124.59	2158727.03	35	5949343.09	2175952.03
13	5950308.09	2156859.43	36	5948674.79	2175232.13
14	5951141.79	2154853.23	37	5948301.49	2174579.33
15	5951976.39	2152648.23	38	5947388.59	2173924.23
16	5952816.79	2150248.43	39	5946907.49	2173311.23
17	5953584.79	2147650.43	40	5946431.39	2172737.23
18	5954277.79	2144875.43	41	5945672.89	2172202.43
19	5954936.19	2141924.43	42	5944554.09	2171705.43
20	5955568.59	2138797.43	43	5943063.09	2171246.43
21	5956179.79	2135497.43	44	5941344.19	2170826.13
22	5956761.79	2132027.43	45	5939381.79	2170443.43
23	5957321.79	2128397.43	46	5937098.79	2170096.43
24	5957861.79	2124643.43	47	5934560.29	2169781.43



Federal Navigation Channel	Beacon, General	Contours
Shoaling Area	Obstruction Point	-48
Placement Area	Navigation Buoy	-47
Anchorage Area	Navigation Buoy	-46
Wreck Area	Shoalest Sounding*	-45
Submerged Wreck		-44
Zone_I_Angle_Points		

**NOTES:**  
 DRAWINGS NOT TO BE USED AS NAVIGATION. ONLY CHANNEL CONDITION AT DATE OF SURVEY. THE LOCATION OF ALL NAVIGATION AIDS ARE BASED ON INFORMATION PROVIDED BY THE U.S. COAST GUARD. BUOY LOCATION REPRESENT THE POSITION OF THE SINKER ONLY.  
 SURVEYED BY THE CORPS OF ENGINEERS.  
 SOUNDINGS WERE TAKEN BY FATHOMETER AND ARE SHOWN TO THE NEAREST TENTHS OF A FOOT.  
 SOUNDINGS ARE BASED ON THE DATUM OF MEAN LOWER LOW WATER AT THE LOCALITY.  
 PLANE GRID AND COORDINATES ARE BASED ON THE STATE OF CALIFORNIA COORDINATE SYSTEM, LAMBERT CONFORMAL PROJECTION, ZONE 1 NAD 83, CALIFORNIA, AS DESCRIBED IN SPECIAL PUBLICATION NO. 235, PUBLISHED BY THE NATIONAL OCEAN SURVEY.  
 PROJECT DEPTHS ARE AS FOLLOWS:  
 BAR & ENTRANCE CHANNEL = 48 FEET  
 NORTH BAY, SAMOATA MILE 5.0 & = 38 FEET  
 EUREKA CHANNEL, FIELDS LANDING CHANNEL & MILE 5.0 TO "N" STREET = 26 FEET

1:00 INDICATES THE NUMBER AND BEGINNING OF A LINE OF SOUNDINGS.  
 SOUNDINGS ARE BASED ON TIDE GAUGES REFERENCED TO U.S.C. & G.S.  
 Vertical and Horizontal Control:  
 NOAA Station: 941 8767 - North Spit, CA  
 Benchmark:  
 NO 11 1940 (PID: LV0359)  
 MLLW Elev: 4.251m  
 Tides:  
 RTK GPS, using GEOID12a and VDATUM  
 RTK elevations calibrated at 10.0ft nail at Coast Guard Station Humboldt Bay  
 Position:  
 RTK Positions  
 \*\*\*\*\* Survey partially complete due to poor conditions. This survey only consists of the area between Station 50+00 to 135+00. Remainder of project will be added as soon as practicable.

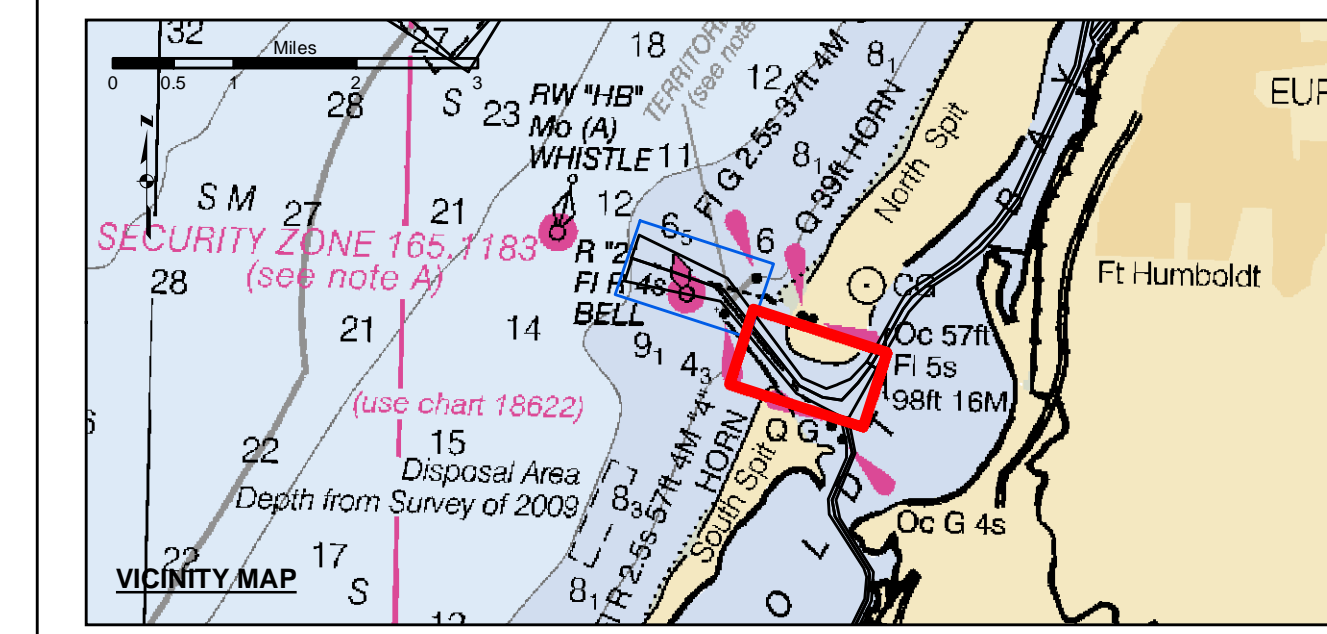
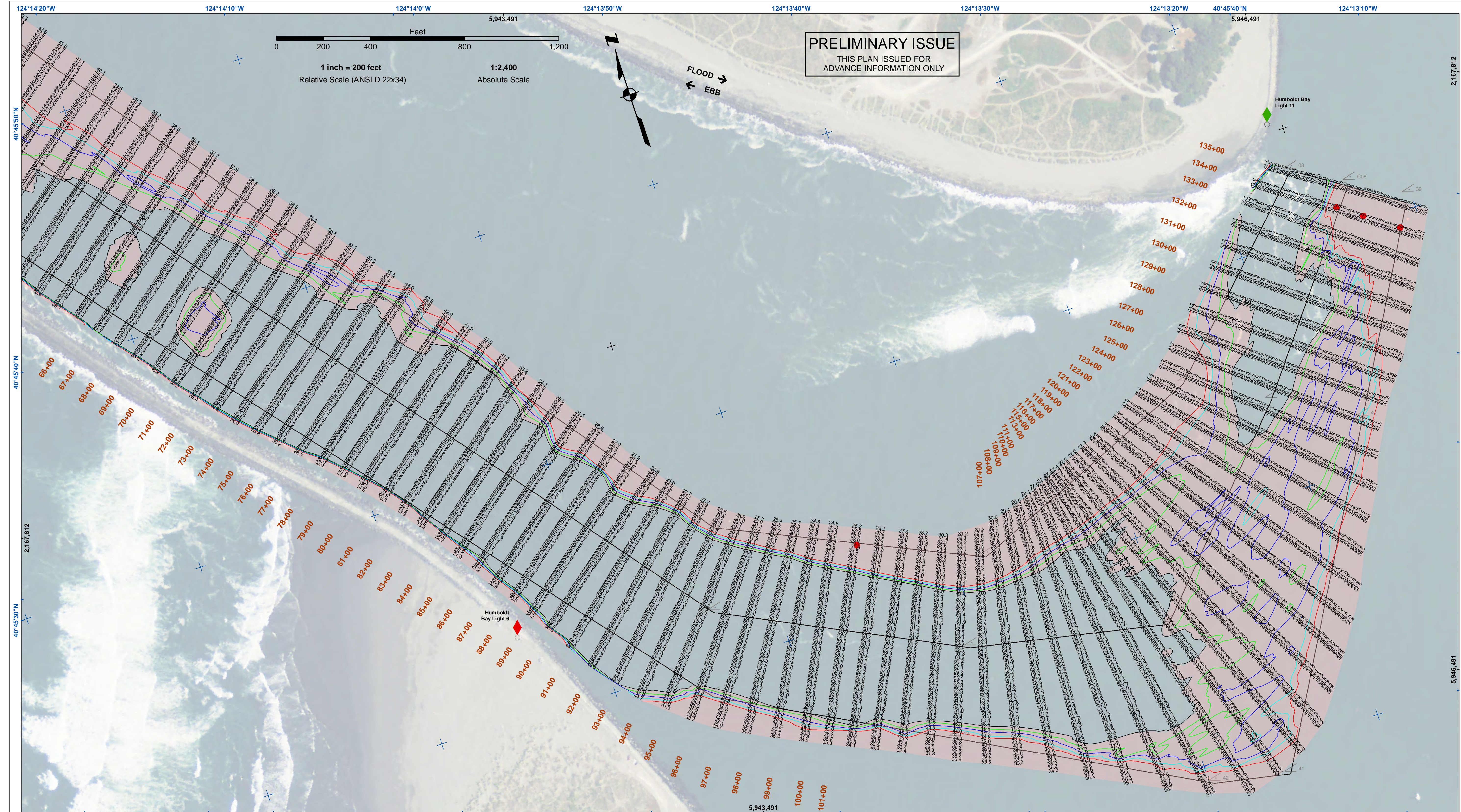


**DISCLAIMER:** The United States Government furnishes this information as a public service. It is not intended to be used for any purpose other than that for which it was prepared. The United States Government makes no warranty, expressed or implied, concerning the accuracy, completeness, or timeliness of the information. The user is responsible for the results of any use of the information. The user is responsible for the results of any use of the information. The user is responsible for the results of any use of the information.

Prepared Under the Direction of:	KEVIN P. ARNETT	Chart Date:	Jan 31, 2022
Designed By:	PDT	Designed by:	PDT
Plotted By:	PDT	Plotted by:	PDT
Checked By:	PDT	Checked by:	PDT
Drawn by:	PDT	Drawn by:	PDT

CALIFORNIA  
**HUMBOLDT COUNTY**  
**HUMBOLDT BAY**  
**BAR & ENTRANCE CHANNEL**  
**CONDITION SURVEY**  
 21 JANUARY 2022

**Sheet Reference Number**  
 1 of 2

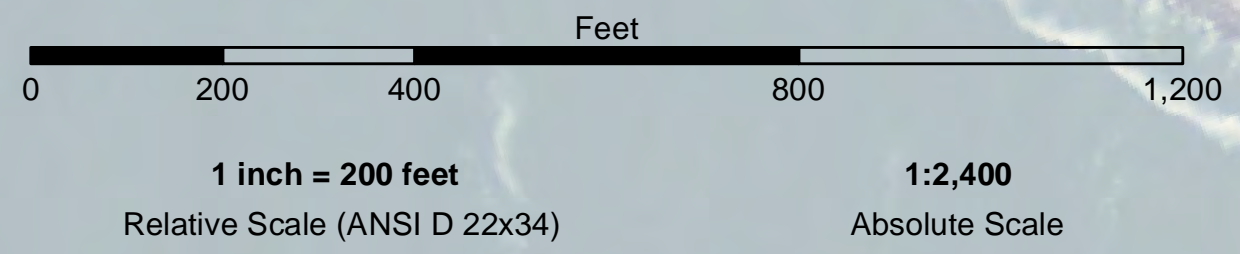


Federal Navigation Channel	Beacon, General	<b>Contours</b>
Shoaling Area	Obstruction Point	-48
Placement Area	Navigation Buoy	-47
Anchorage Area	Navigation Buoy	-46
Wreck Area	Shoalest Sounding*	-45
Submerged Wreck		-44
Zone_I_Angle_Points		

NOTES:  
 DRAWINGS NOT TO BE USED AS NAVIGATION. ONLY CHANNEL CONDITION AT DATE OF SURVEY. THE LOCATION OF ALL NAVIGATION AIDS ARE BASED ON INFORMATION PROVIDED BY THE U.S. COAST GUARD. BUOY LOCATION REPRESENT THE POSITION OF THE SINKER ONLY.  
 SURVEYED BY THE CORPS OF ENGINEERS.  
 SOUNDINGS WERE TAKEN BY FATHOMETER AND ARE SHOWN TO THE NEAREST TENTHS OF A FOOT.  
 SOUNDINGS ARE BASED ON THE DATUM OF MEAN LOWER LOW WATER AT THE LOCALITY.  
 PLANE GRID AND COORDINATES ARE BASED ON THE STATE OF CALIFORNIA COORDINATE SYSTEM, LAMBERT CONFORMAL PROJECTION, ZONE 1 MAD 83, CALIFORNIA, AS DESCRIBED IN SPECIAL PUBLICATION NO. 235, PUBLISHED BY THE NATIONAL OCEAN SURVEY.  
 PROJECT DEPTHS ARE AS FOLLOWS:  
 BAR & ENTRANCE CHANNEL = 48 FEET  
 NORTH BAY, SAMO A TO MILE 5.0 & = 38 FEET  
 EUREKA CHANNEL, FIELDS LANDING CHANNEL & MILE 5.0 TO "N" STREET = 26 FEET

1:00 INDICATES THE NUMBER AND BEGINNING OF A LINE OF SOUNDINGS.  
 SOUNDINGS ARE BASED ON TIDE GAUGES REFERENCED TO U.S.C. & G.S.  
 Vertical and Horizontal Control:  
 NOAA Station: 941 8767 - North Spit, CA  
 Benchmark:  
 NO 11 1940 (PID: LV0359)  
 MLLW Elev: 4.251m  
 Tides:  
 RTK GPS, using GEOID12a and VDATUM  
 RTK elevations calibrated at 10.0ft nail at Coast Guard Station Humboldt Bay  
 Position:  
 RTK Positions  
 \*\*\*\*\* Survey partially complete due to poor conditions. This survey only consists of the area between Station 50+00 to 135+00. Remainder of project will be added as soon as practicable.

**PRELIMINARY ISSUE**  
 THIS PLAN ISSUED FOR  
 ADVANCE INFORMATION ONLY



**US Army Corps of Engineers**  
 San Francisco District  
 450 Golden Gate Ave  
 San Francisco, CA 94102

**DISCLAIMER**  
 The United States Government furnishes this information as a public service. It is not intended to be used for any purpose other than that for which it was prepared. The United States Government makes no warranty, expressed or implied, concerning the accuracy, completeness, or timeliness of the information. The user is responsible for the results of any application of the data for other than its intended purpose. These data belong to the Government. Therefore the user shall not be held liable for any loss or damage resulting from the use of these data to others without also transferring this Disclaimer.

Prepared Under the Direction of	Chart Date:	Jan 31, 2022
LT COLONEL C.E. DISTRICT ENGINEER	Surveyed By:	
Submitted: Hydro Survey Team Leader	Plotted By:	PDT
Recommended: Chief, Hydro Survey Section	Checked By:	PDT
Approved: Chief, Construction Branch	Drawn by:	PDT

CALIFORNIA  
 HUMBOLDT COUNTY  
**HUMBOLDT BAY  
 BAR & ENTRANCE CHANNEL  
 CONDITION SURVEY**  
 21 JANUARY 2022

**Sheet Reference Number**  
 2 of 2